

THE
Camellia
REVIEW

A Publication of the Southern California Camellia Society



Japonica 'Katie'

Southern California Camellia Society, Inc.

An organization devoted to the advancement of the camellia for the benefit of mankind—
physically, mentally and inspirationally.

OFFICERS —1999-2000

| | |
|---|--|
| BRADFORD KING, President 1530 Marendale Lane, Arcadia, CA 91006 (626)445-8730 | DAVID TRUJILLO, Vice President 13265 Catalpa, Etiwanda, CA 91739 (909)899-1650 |
| BOBBIE BELCHER, Secretary-Treasurer U S and Foreign Membership Chairman 7475 Brydon Road, La Verne, CA 91750 (909) 593-4894 | |

DIRECTORS

| | |
|---|--|
| MELVIN BELCHER 7475 Brydon Rd., La Verne, CA 91750 (909) 593-4894 | BRADFORD KING 1530 Marendale Lane, Arcadia, CA 91006 (626)445-8730 |
| SERGIO BRACCI 5567 N. Burton Ave., San Gabriel, CA 91776 (626) 286-4338 | AL LATHAM 655 Prospect Crescent, Pasadena, CA 91103 (626) 744-9445 |
| JOANN BREWER 4166 La Junta, Claremont, CA 91711 (909) 593-3442 | TIM THIBAUT P.O. Box 778, LaCanada, CA 91011 (818) 790-7413 |
| JULIUS CHRISTINSON 3751 Hoover St., Riverside, CA 92504 (909) 688-1547 | DAVID TRUJILLO 13265 Catalpa, Etiwanda, CA 91739 (909) 899-1650 |
| JIM EMMONS 8159 Hollywood Blvd., L.A., CA 90069 (213)656-3291 | JERRY TURNEY 2020 Berkshire Ave, So. Pasadena 91030 (323) 255-9821 |
| MARILEE GRAY 868 Kent Dr., Claremont, CA 91711 (909) 624-4107 | JERRY WITHERS 2123 Via Madonna, Lomita, CA 90717 (310) 530-3555 |
| TOM GILFOY 4131 Encinas Dr., La Cañada-Flintridge, 91011 (626) 790-6947 | DAVE WOOD 2434 Allanjay Place, Glendale, CA 91208 (626) 247-1986 |
| DOROTHY GRIER 13229 Pipeline Ave., Chino, CA 91710 (909) 628-1380 | |

HONORARY LIFE MEMBERS

| | |
|-----------------------|------------------|
| SERGIO BRACCI | JOSEPH E. NUCCIO |
| COLONEL TOM DURRANT | JULIUS NUCCIO |
| BERNICE GUNN THOMPSON | GRADY PERIGAN |
| MARILEE GRAY | |

FOREIGN REPRESENTATIVES

| | |
|--|---|
| YVONNE YOUNG 34 Rushall Street Pymble, NSW 2073, Australia | C. RUSSELL HURST 100 Evans Bay Parade Wellington, New Zealand |
|--|---|

THE CAMELLIA REVIEW

MEL BELCHER, Editor
7475 Brydon Road, La Verne, CA 91750 • (909) 593-4894 • melbelcher@earthlink.net

Published by the Southern California Camellia Society, Inc. Copyright 2000

Four issues per volume:

September-October, November-December, January-February, March-April

Send correspondence and manuscripts for publication directly to the Editor.
Republication is permitted if due credit is given to *The Camellia Review* and the author.
CHANGE OF ADDRESS; Notify the Secretary at once (PLEASE!). Magazines are not
forwarded by the Post Office and the Society is charged first class mailing fees to have
them returned.

TABLE OF CONTENTS

Vol.. 61

March-April, 2000

No. 3

| | |
|--|----|
| 2001 International Camellia Congress | 3 |
| Descanso Camellia Festival, Brad King | 4 |
| Better Late Than Never—But 40 Years?, Jim Emmons | 5 |
| Camellia Reticulata Genealogy, C. Edwards Simons | 8 |
| 'Nicky Crisp', Robert Magrill | 10 |
| The Strain's The Game, E. C. Snooks | 11 |
| Show Results | |
| Delta Camellia Society Show | 12 |
| Southern California Camellia Council | 14 |
| Camellia Society of Kern County | 17 |
| Camellia Society of Sacramento | 19 |
| Northern California Camellia Society | 21 |
| Announcement from Glenn Read Nursery | 18 |
| Welcome New Member | 18 |
| The Past Meets the Present | 23 |
| Index of Camellia Review and Authors, Vol. 61 | 24 |

COVER PHOTO

Japonica 'Katie'. Salmon rose pink. Very large semidouble. Vigorous, compact, upright growth. Introduced by Nuccio's Nurseries in 1979.

Photo by Grady Perigan

AN INVITATION TO JOIN

THE SOUTHERN CALIFORNIA CAMELLIA SOCIETY

The Southern California Camellia Society will welcome you as a member.

Annual membership — \$25.00

Includes subscription to *The Camellia Review* (four issues per year).

In a three-year period, a membership includes one revised edition of *Camellia Nomenclature* with over 150 pages describing more than 4,000 camellias at a cost of \$10.00.

Please send name, address and check payable to:

SOUTHERN CALIFORNIA CAMELLIA SOCIETY

7475 Brydon Road, La Verne, CA 91750

| | | | |
|----------------|----------|-------------------|----------|
| New Member | \$25.00 | Sponsoring Member | \$50.00 |
| Regular Member | \$25.00 | Sustaining Member | \$100.00 |
| Patron Member | \$150.00 | | |

THOUGHTS FROM THE EDITOR



While considering "Thoughts" for this issue of The Review I kept coming back to two important facts about camellias that are distinct yet closely related.

The first deals with the past. During Descanso Gardens' Camellia Festival in February of this year I had the pleasure of visiting with the descendants of the E. C. Tourje family. "Carl" Tourje was one of a dozen or so patriarchs to whom we in Southern California owe great credit for their introduction and propagation of camellias, particularly the *reticulatas* that we enjoy so much today. A copy of a 1958 photo of the "Grand Old Men of Camellias" can be seen on page 23 of this issue. The very existence of Southern California

Camellia Society can be attributed to these patriarchs. In 1958, under the sponsorship of the Southern California Camellia Society, Carl Tourje, with the aid of collaborating authors, published a highly regarded book, *Camellia Culture*. As Editor of the Review I still frequently refer to this book

The second fact deals with the International Camellia Congress hosted by Southern Cal and co-sponsored by Descanso Gardens and The Huntington to be held in February 2001. This Congress will feature tours of Nuccio's Nurseries and a variety of private gardens in California. The Congress meetings and activities, together with the Pre and Post-Congress tours, will enable us to get better acquainted with our international visitors as we enjoy the sites of interest in California and papers presented by internationally recognized camellia experts

My appeal as Editor of the Review is that many of our Southern Cal members who may not already be members of the International Camellia Society will participate in this epoch event.

For me, it is interesting to speculate on the role we play today as we bridge the contributions of the past with the celebration of the camellia in the future.

Thanks once again to our faithful photographer Mary Williams and her ever-ready camera.

—Mel Belcher, Editor

CAMELLIA STATIONERY

Our beautiful camellia notecards (*back cover*) are still available in sets of eight for \$6.00 including tax and shipping. Folks who use them (and re-order) tell us how truly lovely they are. They make wonderful gifts for your fellow camellia lovers or those you are trying to get interested in this great hobby! You can even order them for your own use. They also look beautiful in frames.

Cards can be ordered through Dorothy Grier, 13229 Pipeline Ave., Chino, CA 91710, (909) 628-1380, or through Southern California Camellia Society, 7475 Brydon Road, La Verne, CA 91750, (909) 593-4894. In either case, make your check payable to SCCS.

If any camellia society would like to use these cards as "fund raisers," orders for 25 or more sets are priced at \$5.00 each, including tax and shipping.

TO CAMELLIA ENTHUSIASTS EVERYWHERE—
“Celebrate the Camellia” at the 2001 International Camellia Congress
Hosted by Southern California Camellia Society
Co-sponsored by Descanso Gardens and The Huntington

The details are still being worked out., but here is a sample of what is being planned—

2001 Camellia Congress “Celebrating the Camellia” February 21-24

Highlights include—

- Welcoming reception and dinner
- Presentation of technical and professional papers by leading experts
- Descanso Gardens—renowned 35-acre camellia forest with over 800 taxa, 50,000 camellias and a research garden
- Huntington Botanical Gardens—13 prestigious gardens and acclaimed art collections
- Nuccio’s Nurseries—internationally-known camellia and azalea nursery
- Private gardens of Southern California camellia hobbyists
- Southern California Camellia Council’s 44th Annual Camellia Show at Descanso Gardens
- Formal concluding dinner

Pre-Congress Tour “The Best of Southern California” February 16-20

Highlights include—

- Welcoming reception and Southern California Camellia Society’s 29th Annual Camellia Show at Huntington Botanical Gardens
- Outstanding public gardens and nurseries—Quail Botanical Gardens, Sherman Gardens, Roger’s Gardens, Getty Museum and Art Galleries
- A tour of unique public gardens or a tour of the L.A. Flower Mart and historic Los Angeles

Post-Congress Tour A “Scenic California Coastline” February 25-March 3

Highlights include—

- Lotus Land
- The Wine Country—producer of some of the world’s finest wines
- Solvang—quaint Danish village with unique specialty shops
- Hearst Castle—spectacular home and gardens of newspaper publisher William Hearst
- Monterey—seaside village with famous Monterey Bay Aquarium, Cannery Row, specialty shops
- Point Lobos—state reserve with roaring surf, steep cliffs and beautiful pines
- San Francisco—romantic city with famous Golden Gate Park and Golden Gate Bridge

Extended Post-Congress Tour B “The Sacramento Scene” March 3-5

Highlights include—

- California’s state capitol and gardens
- Sacramento Camellia Society’s camellia show

We hope to see YOU in Southern California in 2001!

DESCANSO CAMELLIA FESTIVAL

Brad King, Arcadia, California

The joint meeting of the Southern California Camellia Society and the Pacific Camellia Society kicked off the second annual Descanso Garden Camellia Festival held February 24th through the 27th.

Sergio Bracci presented a life achievement award to Ralph Peer, which was accepted by his son Ralph Peer, II for his pioneering work in bringing Camellias to the United States.

Robert Ehrhart, past president of the American Camellia Society and a camellia enthusiast, gave the keynote address. Bob's talk was amusing, interesting, and informative. He began his lively speech with jokes like this..."The two most frequent fears are public speaking and dying. If that's true, then the one in the casket would be considered better off."

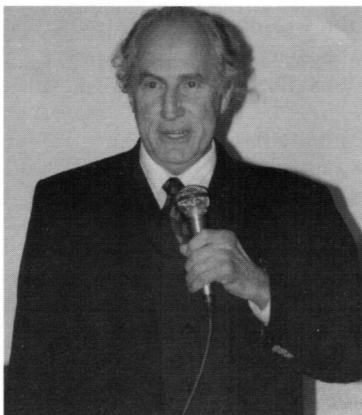
He informed us that he has about 10 camellias in the ground and 2,600 in pots because the natural soil in his garden is adobe—too hard for planting. A very successful grower, Bob uses a coarse loose container mix of fir bark, perlite, and dolomite.

This provides excellent drainage and thereby controls root rot. He waters 5-7 minutes every third day in the summer and every fourth day when it's cool.

I also found his list of favorite Camellias very interesting and helpful. If you want show winners, Bob's top ten are:

1. 'Junior Prom'
2. 'Royal Velvet'
3. 'Royal Velvet Variegated'
4. 'Ruta Hagmann'
5. 'Linda Carol'
6. 'Frank Houser Variegated'
7. 'Angel Wings'
8. 'Phyllis Hunt'
9. 'Lady Pamela'
10. 'Queen Bee'

I left inspired and purchased 'Shibori Egao' root stock to graft and make a 'Royal Velvet Variegated' and a 'Frank Houser Variegated'. My wife Lynn's notes were used extensively for this article so I'd like to thank her publicly. I'd also like to ask her: If Bob has 2,600 camellias may I please have ten more camellias in pots and have more than the limit of 100 I promised?



Bob Ehrhart, Camellia Hobbyist
Extraordinaire



Bob Ehrhart with Camellia Society Presidents
David Trujillo (Pomona) Brad King (Southern
Cal) and Tom Gilfoy (Pacific)

BETTER LATE THAN NEVER – BUT 40 YEARS?

Jim Emmons, Groundskeeper at Park Hill

Those of us who remember or have since learned of the "golden years" of camellias in California, ie the 40's, 50's and 60's, are well aware of the name of Ralph Sylvester Peer. In the brief time he was associated with camellias, from around mid 1944 until his passing on January 19, 1960, it is arguable that none had a greater impact on the flower than did he. His accomplishments are too numerous to list, but here are some high lights.

- He was the founder and the first president of the Los Angeles Camellia Society in the 1950's.

- In 1952 he was elected to the Los Angeles Camellia Council. He served as the State Director from California to the American Camellia Society board of directors from 1954 to 1958. He was elected as President of A.C.S., the first ever from the Pacific Coast, in 1957.

- In 1954 he was awarded the Veitch Gold Metal by the Royal Horticultural Society of London, a society of which he was a Fellow, for his contributions to the Camellia world.

- He served as Vice President of the Southern California Camellia Council and contributed much support to the organization.

- He was also a Director of the America Horticultural Society in 1958.

- He established the Ralph Peer Sasanqua award for the American Camellia Society, an award still functioning today.

- His generous support of the Japanese Camellia Society after the war helped to renew interest in the camellia hobby and helped to renew friendships. He financed the first Japanese nomenclature on japonicas and also the first book in Japan on Sasanquas and Higo camellias.

- He financially aided Choka Adachis with his book on Camellias.

- One of his greatest achievements was the financing of J. Robert Sealy's

book on the Genus Camellia, one of the truly fine publications and still in demand. Robert Sealy had this to say about Ralph Peer, "Ralph Peer is the most single-minded devotee of camellias that I know."

Ralph Peer's greatest achievement was the importation of the reticulata camellia into the United States along with E. Manchester Boddy. These cultivars, from Kunming in China, had never been seen in the United States. Mr. Peer graciously gave scions of the reticulatas to many nurseries at no cost to them; therefore many could share in these beautiful flowers. (The above was kindly provided by Sergio Bracci.)

As one considers the accomplishments of Ralph Peer, the thought may come to mind, as it did with me, why wasn't Ralph Peer ever named a Fellow of the American Camellia Society and awarded the Bronze Plaque "In recognition of outstanding achievement and valuable contributions to the knowledge of the genus Camellia"? With this apparent oversight in mind, a letter was sent in January, 1999, to Mr. Arthur P. Landrey, President of the American Camellia Society. That letter was never received. Fortunately, a copy of the letter was sent to Sergio Bracci, a State Director of American Camellia Society for California. It was that copy of the letter that brought this idea to fruition.

Sergio, fully agreed that something needed to be done especially after he stopped by Nuccio's Nursery and got an "ear full" from one of Ralph Peer's biggest supporters. Sergio contacted the A.C.S. Board of Directors and, after his impassioned appeal, the honor was immediately awarded.

On February 24, 2000, at the joint meeting of the Southern California and Pacific Camellia Societies, and as part of the Descanso Garden's

Camellia Festival, a plaque honoring Ralph S. Peer as a "Fellow of the American Camellia Society" was presented to his son, Ralph Peer II. Ralph took a few moments to thank all those involved with the award and to reminisce about his father who died when he was 15 years old. Many of his fondest memories of his father were in the gardens at Park Hill working with and discussing

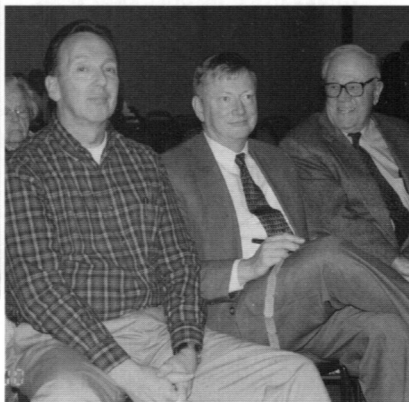
camellias. The event was also an opportunity for Ralph to renew friendships. At the presentation were two men who knew Ralph S. Peer personally—Edwards Metcalf and Julius Nuccio both knew him and called him friend.

The evening was a memorable one by many standards but to those of us who knew or knew of Ralph S. Peer it was a gratifying evening indeed.



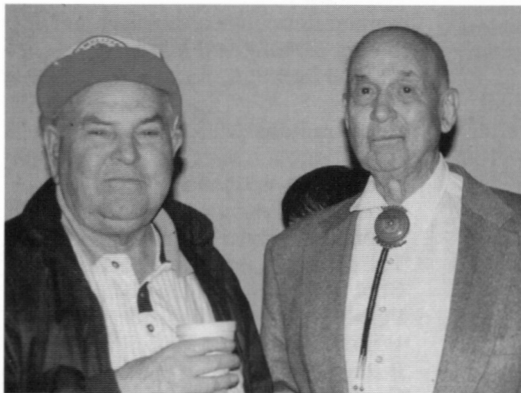
Ralph Peer II

Jim Emmons, Ralph Peer II and Julius Nuccio



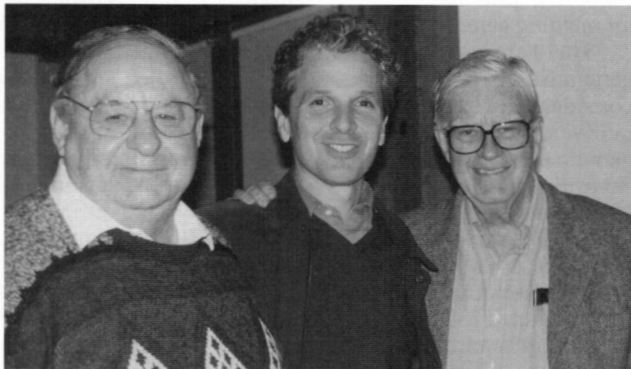
Julius Nuccio, Ralph Peer II with the plaque honoring his father as a Fellow of the American Camellia Society and Sergio Bracci, Director of the American Camellia Society.

ENJOYING DESCANSO'S SPRING 2000 FESTIVAL KICK-OFF!



Tom Hughes and
Edwards Metcalf share
memories

Sergio Bracci,
Richard Schulhof
and Bill Burrows,
Chairman of the
Descanso Gardens
Board



The beautiful trophy table at the Southern California Camellia Show at
The Huntington

CAMELLIA RETICULATA GENEALOGY (a.k.a. Bean Counting)

C. Edwards Simons, M.D.

Edmonds, Washington

As a recent addition to the membership of Southern Cal and an early ancient gardener, I felt compelled during the dreary winter near N47°87'W11°30' with 40" rainfall in the past four months to peruse 1999 *Camellia* Nomenclature in some detail. It occurred to me that the origin of the several *reticulata* cultivars attributed to the first millennium anon domino and available post WWII coincided with the migration to Iceland of a hardly small group of Vikings whose descendants have remained quite isolate and constitute an ongoing genetic research interest.

There are essentially only three generations of recent *reticulatas* to consider. The use of the initial eleven cultivars in hybridization and their genetic penetration of the 617 "hybrids" registered in the Nomenclature is the subject of this article. The methodology consists only of the identifiable passing on of genes in general and not the actual degree of penetration. The accuracy should be with 2%-4% and should suffice for the intent.

The following is a resume of the actual "bean count" which hopefully will be understandable and perhaps useful in future *reticulata* hybridizing plans. The form is that of a "laundry list." Any presence of cultivar genes in the inheritance of a registered hybrid receives a score of one unit credit only.

Assume that the primary crosses with Yunnan *reticulatas*, either within the group or early out-crosses, used the *reticulata* as the seed parent in almost all instances; in later crosses probably a mixed bag. Initial crosses within the group demonstrate the complex matrix of genes already present—100 seedlings showed marked variation in foliage, flowers, habit, vigor and stance, etc. (See ref. Fred Tuckfield below.)

Yunnan *Reticulatas*—number and percent of registered hybrid recipients of genes from:

| | | |
|------------------------|-----|--------|
| 'Crimson Robe' | 163 | 48.5 % |
| 'Cornelian' | 181 | 33.4% |
| (include 4 'Lionhead') | | |
| 'Moutancha' | 24 | 4.4% |
| 'Captain Rawes' | 20 | 3.7% |
| 'Tali Queen' | 19 | 3.5% |
| 'Shot Silk' | 10 | 1.9% |
| 'Purple Gown' | 8 | 1.5% |
| 'Willow Wand' | 7 | 1.3% |
| 'Butterfly Wings' | 6 | 1.1% |
| 'Confucius' | | 40.7% |

(actually *Retic x pitardii* hybrid, China)

'Pagoda' 0

(a.k.a. 'Robert Fortune, England, 1847, sterile cultivar)

Total **542**

registered presence of Yunnan *reticulatas* in cultivars

Usage of non-*reticulatas* probably mostly as pollen donors:

| | | |
|----------------------|-----|-------|
| Japonica cultivars | 132 | 33.9% |
| Pitardii and var. | 93 | 23.9% |
| Saluenensis and var. | 75 | 19.3% |
| <i>Reticulata</i> | | |
| (wild form) | 39 | 10.0% |
| Sasanqua and var. | 29 | 7.5% |
| Granthamiana | 11 | 2.8% |
| Lutchuensis | 6 | 1.5% |
| Oelifera | 2 | |
| Fraterna | 2 | |

Total **389**

registered pollen donors mostly

Unidentified *reticulata* seedlings **344**

Unidentified pollen source **362**

Grand total: Registered as identified plus identified (or undisclosed)

Reticulatas **886**

Other sources—pollen donors **751**

The excess numbers are result of back-crosses and multiple applications on both sides of many secondary and tertiary crosses.

Special problem:

'Buddha' (#11) 73
(*Reticulata x pitardii* hybrid, China.
Scored as such)

Comment and conclusions: It is obvious that the large majority of *reticulata* hybrid cultivars produced in the past half century have advanced from a very narrow base of *reticulata* introductions and a broader base of *japonica* and other species still somewhat limited in number based on identified and recorded data. The object seems to have been emphasis on bright and deep red tones. Maybe the off-whites, pastels and watermelon shades need some more work. Other sources have contributed form, color, floral dimensions, stature, foliage, hopefully a measure of stamina and hardiness and, perhaps, a start on significant fragrance. Certain assets will need to come mostly from the pollen side initially. This type of review is obviously limited in scope and a more detailed study would identify other factors. For instance, the most used resulting hybrids include

'Jean Pursel', 'LASCA Beauty' and 'Mouchang'. Others can be sorted out and are no doubt familiar to hybridists

To the future—Picture a fragrant and bone-hardy 'Moutancha'! The progress should be interesting! The Nomenclature does not take into account the status available nor disposition of 1980 *reticulata* cultivars obtained ex China by the University of California Botanic Garden.

References:

- RHS Rhododendron and Camellia Yearbook*, 1968
The Peer Memorial Lecture
Colonel T. Durrant, p. 76
T. H. Finlay, p. 11
F. S. Tuckfield, p. 162
ACS Camellia Yearbook, 1972
Wendell Levi, p. 138
Clifford R. Parks, p. 38
ACS Camellia Yearbook, 1991
W. L. Ackerman, p. 113
Clifford R. Parks, p. 154
Bill Donnan, p. 137
ACS Camellia Yearbook, 1998
W. L. Ackerman, p.46
The Illustrated Encyclopedia of Camellias Stirling Macoboy, 1997
The Timber Press, Portland, Oregon

NUCCIO'S INTRODUCTIONS FOR 1999-2000

'Tama Peacock'—*Japonica*, medium, semidouble, "maroonish"
red to white border

'Slim and Trim'—*Sasanqua*, single, deep pink

'Stars and Stripes'—*Sasanqua*, white with red stripes

'Ay Ay Ay'—*Japonica*, medium, semi-double.

Sport of 'Oo-La-La', strawberry pink with red stripes

**NUCCIO'S
NURSERIES**

—Write for a free catalog

3555 Chaney Trail
P.O. Box 6161, Altadena, CA 91001
(626) 794-3383

Closed Wednesday and Thursday and on Sundays, June through December

'NICKY CRISP'

Robert Magrill M.D., San Marino

'Nicky Crisp' the non-reticulata hybrid camellia which was bred in New Zealand by Bettie Durrant in 1979 by crossing *C. pitardii* and *C. japonica* produced the outstanding slow growing small shrub which tends to grow upwards rather than spreading out. 'Nicky Crisp' produces beautiful flowers which are hardy and tend to do well planted in the ground as well as in pots for limited space gardeners.

Mrs. Bettie Durrant was an early hybridist who named the cross between *C. pitardii* and *C. japonica* for her daughter. 'Nicky Crisp' is one of the most beautiful camellias bred in recent years. The flowers are semidouble and cool pink, given distinction by the deeply notched petals and golden anthers which retain their bright tone for the life of the flowers. They are 4 1/2 inches wide. They are a fitting memorial to the breeder.

"Camellias are sweet like mothers, gentle like fathers and tender like grandmothers," so mused the Japanese flower arranger Choka Adachi in 1960. Camellias have become part of the cultural fabric of Japan where they are still regarded with reverence. The earliest recorded reference to camellias in Japan occurred nearly 2000 years ago.

In the United States a lady writing under the *nom de plume* "Flora" in 1851 in a Georgia

garden magazine wrote, "In answer to the question what contributes most to cheer our parlors during the cold and stormy days of winter? The answer. The beautiful camellia. As we turn from the dreary scene outside to a group of blooming camellias and are greeted with the freshness and glory of spring. The rose is admired all the world over. It smiles when all nature smiles. Not so the camellias. Its foliage

is as glossy as polished alabaster and its limbs are as smooth as the plumage of a pigeon. It blooms when the lawns and gardens are sad, when the fields and woods are wearing the drapery of winter—when the lingering chrysanthemum has bowed its head to the sceptre of the icy king. It is a link between the last leaves of summer and the first buds of spring."

There seems to be little doubt that the lady "Flora," even allowing for the romantic

extravagance of her language and the date of February 14th on the calendar as St. Valentine's Day, was extremely taken with camellias, the queen of the winter flowers.

Editor's note: 'Nicky Crisp' is showing up more and more on the trophy tables!



THE STRAIN'S THE GAME

E. C. Snooks, La Jolla, California

Have you ever noticed that certain people consistently win with the same variety year in and year out? You may have also noticed that these same growers don't do that well with the many other blooms they enter. We all have seen this phenomenon but probably never stopped to think about it or to wonder why. We have to assume that all the plants in a given collection are given the same treatment and with most serious hobbyists now growing in containers one can't even assign the cause to soil conditions or location.

The most likely explanation is that that grower possesses a superior strain or clone of this "winning" variety. Some years back, while living in Aiken, SC, it was noted that the japonica class was often won by the cultivar 'Flame' and without fail it was grown by June Henderson. Now June was an excellent gardener but never did as consistently well with her other entries. After a few years 'Flame' was still winning, but now the blooms were owned by others as well. Upon investigation it was found that all of the winning blooms had been grown on plants grafted from June's superior clone. Other cases have also been observed.

It clones or strains of various cultivars exist, and it appears that they do, what is the cause? No definitive studies have been made of the subject but two probably causes come to mind. Both are based upon mutation.

1 These superior clones might be simply a mild form of sporting, i.e., mutation. Two general forms of mutation are recognized—gene and

chromosomal. Without going into technical details, it should be noted that gene mutations generally cause less change than chromosomal mutations. Hence, these superior strains might be the result of a gene mutation.

A more likely cause, in this writer's mind, is a specialized form of gene mutation caused by grafting. Everyone will agree that grafting is a most drastic form of surgery and in the process of callusing many cells are dividing and developing. With this amount of cellular activity taking place it is not unlikely that a simple gene rearrangement or displacement could take place. Further support is given to this theory by the fact that the appearance of variable strains is most common in those cultivars being propagated by grafting and is quite unknown in those being propagated by vegetative cuttings. When one considers that hundreds if not thousands of cuttings are grown for each one grafted the reverse condition should be expected if the first idea is correct. So, is grafting the cause? Far more careful studies will have to be made to answer the question. Indeed we may never know. If it is, the reverse condition—inferior strains—should also appear. These, too, exist.

So, what does this all mean? Thought we don't know the cause of this phenomenon at this time, we must recognize its existence. We must be observant of superior forms and propagate from them whenever possible. Why have a VW in your garden when you could have a Rolls Royce?

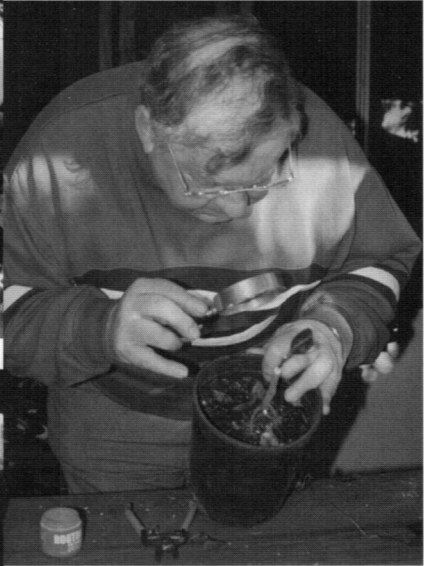
It is not because things are difficult that we do not dare; it is because we do not dare that they are difficult.

—Seneca



David Trujillo, Marilee Gray,
Julius Christinson

**A recent grafting
"party" in the Bracci
Garden**



Sergio, the really serious grafter



"Students" Jac Fagundo, Norman
Cerlew, Pat McKenny and Teacher
Bob Jaacks

DELTA CAMELLIA SOCIETY SHOW

Pittsburg, California
February 19 and 20, 2000

Sweepstakes
Runner-up Sweepstakes
Challenge Award
Best of Show
Best White

Don & Mary Bergamini
Robert Ehrhart
Bob & Nancy Steele
Larry & Nancy Pitts
Tom Pulos

'Showtime'
'Elegans Champagne'

Japonicas—Very Large
Best Single
Runner-up Single
Best Tray of 3

'Showtime'
'Mary Fischer'
'Moonlight Bay'

Larry & Nancy Pitts
Larry & Nancy Pitts
Don & Joan Lesmeister

Japonicas—Large

| | | |
|------------------|------------------------|---------------------|
| Best Single | 'Gee Homeyer' | Larry & Nancy Pitts |
| Runner-up Single | 'Junior Prom' | Larry & Nancy Pitts |
| Best Tray of 3 | 'Firedance Variegated' | Tony Miranda |
| Best Tray of 5 | 'Tomorrow Variegated' | Larry & Nancy Pitts |

Japonicas—Medium

| | | |
|------------------|-------------------------|----------------------|
| Best Single | 'Firedance Variegated' | Joe Roup |
| Runner-up Single | 'Chie Tarumoto' | Jim & Jackie Randall |
| Best Tray of 3 | 'Rudy's Magnoliaeflora' | Jim & Jackie Randall |

Japonicas—Small

| | | |
|------------------|-----------------------|---------------------|
| Best Single | 'Kitty' | Larry & Nancy Pitts |
| Runner-up Single | 'Something Beautiful' | Harlan Smith |
| Best Tray of 3 | 'Grace Albritton' | Don & Sue Kendall |

Japonicas—Miniature

| | | |
|------------------|------------------|----------------------|
| Best Single | 'Paper Doll' | Don & Sue Kendall |
| Runner-up Single | 'Little Bo Peep' | Don & Mary Bergamini |
| Best Tray of 3 | 'Paper Doll' | Robert Ehrhart |

Best 5 Boutonnieres

| | |
|--------------|----------------|
| 'Lemon Drop' | Robert Ehrhart |
|--------------|----------------|

Reticulata or Reticulata Hybrids

| | | |
|--------------------------|----------------------------|----------------------|
| Best Single over 5 1/2" | 'Larry Piet' | Robert Ehrhart |
| Runner-up Single | 'Emma Gaeta Variegated' | Bob and Joan Conlin |
| Best Single under 5 1/2" | 'Valentine Day Variegated' | Jim & Jackie Randall |
| Runner-up under 5 1/2" | 'Valentine Day' | Larry & Nancy Pitts |
| Best Tray of 3 | 'LASCA Beauty' | Robert Ehrhart |

Non-Reticulata Hybrids

| | | |
|------------------|-------------------------|-----------------------|
| Best Single | 'Jubilation Variegated' | Edith Mazzei |
| Runner-up Single | 'Angel Wings' | Eric Hansen |
| Best Tray of 3 | 'Waltz Time Variegated' | Don & Joan Lesmeister |

Best Collection of 4 different color forms (red, pink, white, multi-colored)

| | |
|---|-------------------|
| 'Edna Bass', 'Showtime', 'Ragland Supreme', 'Dixie Knight Supreme' | Don & Sue Kendall |
|---|-------------------|

Best Collection of 3

| | |
|---|-----------------------|
| 'Royal Velvet', 'Betty Foy Sanders', 'Alison Leigh Woodroof' | Don & Joan Lesmeister |
|---|-----------------------|

Best Collection of 9 Boutonnieres

| | |
|--|-------------------|
| 'Little Babe Variegated', 'Little Michael', 'Little Babe', 'Ellen Daniels', 'Grace Albritton', 'Something Beautiful', 'Black Tie Variegated', 'Buddy', 'Black Tie' | Don & Sue Kendall |
|--|-------------------|

Best Youth Japonica**Best Youth Hybrid****Best Youth Boutonniere****Best Seedling Japonica****Best Seedling Hybrid**

| | |
|----------------------|---------------------|
| 'Tata' | Jarod Bates |
| 'Marion Edwards' | Chris Bergamini |
| 'Lemon Drop' | Jarod Bates |
| 'Hallstone Fragrant' | Larry & Nancy Pitts |
| F325 | Howard Oliver |

SOUTHERN CALIFORNIA CAMELLIA COUNCIL

43rd Annual "Spring" Show

February 26 and 27, 2000

Descanso Gardens

Japonicas—Large/Very Large

| | | |
|---------------------|---------------------|---------------------------|
| Best Single | 'Junior Prom' | Marvin & Virginia Belcher |
| Runner-up Single | 'Royal Velvet' | Jac & Kathy Fagundo |
| Best Tray of 3 | 'Katie' | Mel & Bobbie Belcher |
| Runner-up Tray of 3 | 'Royal Velvet' | Deniece Douglass |
| Best Tray of 5 | 'Royal Velvet' | Mel & Bobbie Belcher |
| Runner-up Tray of 5 | 'Elegans Champagne' | Sergio & Elsie Bracci |

Japonicas—Medium

| | | |
|---------------------|-------------------------|---------------------------|
| Best Single | 'Grand Marshal' | Marvin & Virginia Belcher |
| Runner-up Single | 'Betty Foy Sanders' | Art & Chris Gonos |
| Best Tray of 3 | 'Marie' | Art & Chris Gonos |
| Runner-up Tray of 3 | 'Jennie Mills' | Art & Chris Gonos |
| Best Tray of 5 | 'Rudy's Magnoliaeflora' | Art & Chris Gonos |
| Runner-up Tray of 5 | 'Candy Apple' | Marvin & Virginia Belcher |

Japonicas—Small/Boutonniere

| | | |
|---------------------|-----------------------|---------------------------|
| Best Single | 'Hishi-Karaito' | Mel & Bobbie Belcher |
| Runner-up Single | 'Black Tie' | Art & Chris Gonos |
| Best Tray of 3 | 'Something Beautiful' | Art & Chris Gonos |
| Runner-up Tray of 3 | 'Man Size' | Marvin & Virginia Belcher |
| Best Tray of 5 | 'Man Size' | Marvin & Virginia Belcher |
| Runner-up Tray of 5 | 'Pink Perfection' | Art & Chris Gonos |

Japonicas—Miniature

| | | |
|------------------|-----------------------|---------------------------|
| Best Single | 'Something Beautiful' | Marvin & Virginia Belcher |
| Runner-up Single | 'Kitty' | Sergio & Elsie Bracci |

Reticulata or Reticulata Hybrid

| | | |
|---------------------|---------------------------|-----------------------|
| Best Single | 'W. P. Gilley Variegated' | Mel & Bobbie Belcher |
| Runner-up Single | 'May Westbrook' | Mel & Bobbie Belcher |
| Best Tray of 3 | 'Emma Gaeta Variegated' | Sergio & Elsie Bracci |
| Runner-up Tray of 3 | 'Dr. Clifford Parks' | Les & JoAnn Brewer |
| Best Tray of 5 | 'Valley Knudsen' | Mel & Polly Canfield |
| Runner-up Tray of 5 | 'Cornelian' | Sergio & Elsie Bracci |

Non-Reticulata Hybrid

| | | |
|---------------------|----------------------------|---------------------------|
| Best Single | 'Julia' | Marvin & Virginia Belcher |
| Runner-up Single | 'Pink Dahlia' | Art & Chris Gonos |
| Best Tray of 3 | 'Night Rider' | Art & Chris Gonos |
| Runner-up Tray of 3 | 'Coral Delight Variegated' | David & Susan Trujillo |
| Best Tray of 5 | 'Nicky Crisp' | Mel & Bobbie Belcher |
| Runner-up Tray of 5 | 'Night Rider' | Art & Chris Gonos |

Species

| | | |
|------------------|-----------|-----------------------|
| Best Single | 'Egao' | Art & Chris Gonos |
| Runner-up Single | 'Lapadia' | Sergio & Elsie Bracci |

Special Culture

| | | |
|--------------------------|--------------------------|-----------------------|
| Best Large Japonica | 'Show Time' | Mel & Bobbie Belcher |
| Runner-up Large Japonica | 'Royal Velvet' | Art & Chris Gonos |
| Best Medium Japonica | 'Dixie Knight Supreme' | Sergio & Elsie Bracci |
| Runner-up Medium | 'Silver Chalice' | Art & Chris Gonos |
| Best Reticulata | 'Harold L. Paige' | Sergio & Elsie Bracci |
| Runner-up Reticulata | 'Linda Carol' | Sergio & Elsie Bracci |
| Best Non-Reticulata | 'Kramer's Fluted Coral' | Art & Chris Gonos |
| Runner-up Non-Reticulata | 'Pink Dahlia Variegated' | Art & Chris Gonos |

Collector's Tray of 3 Mixed Varieties

| | | |
|----------------|---|--------------------|
| Best Tray | 'Miss Tulare', 'Maroon and Gold', 'Candy Apple' | Les & JoAnn Brewer |
| Runner-up Tray | 'Moonlight Bay', 'Hawaii', 'Something Beautiful' | Art & Chris Gonos |

Best Fragrant

| | |
|------------------|-------------------|
| 'High Fragrance' | Art & Chris Gonos |
|------------------|-------------------|

Best Seedling—Japonica

Tom & Dody Gilfoy

Best Seedling—Non-Reticulata Hybrid

Rudy V. Blanco

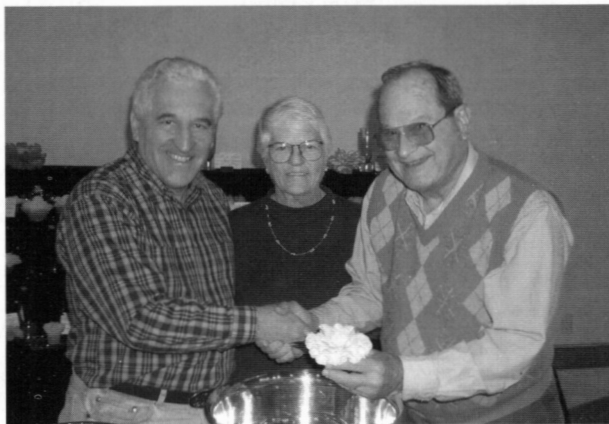
Novice

| | | |
|----------------------------|----------------------|-------------------|
| Best Large/Very Large | 'Mathotiana' | Tierra Leustig |
| Runner-up Large/Very Large | | Ania Kubik |
| Best Medium | 'Pharaoh' | Patricia McKenney |
| Runner-up Medium | 'Alba Plena' | Patricia McKenney |
| Best Small/Miniature | 'Debutante' | Elizabeth P. Lent |
| Runner-up Small Miniature | 'Bella Romano' | Elizabeth P. Lent |
| Best Tray of 3 | 'Elegans Variegated' | Tierra Leustig |
| Runner-up Tray of 3 | 'Covina' | Tierra Leustig |

Court of Honor

| | |
|---|---------------------------|
| 'Hishi- Karaito' (3) | Sergio & Elsie Bracci |
| 'Elsie Jury', 'Margaret Davis', 'Tom Thumb' | Bob & Alice Jaacks |
| 'Red Hots' | Art & Chris Gonos |
| 'Jerry Donnan' | Les & JoAnn Brewer |
| 'Buttons 'N Bows' (3) | David & Susan Trujillo |
| 'Buttons 'N Bows' (5) | Deniece Douglass |
| 'Pharaoh' (5) | Sergio & Elsie Bracci |
| 'Kramer's Supreme' (5) | D. T. Gray Family |
| 'Nuccio's Cameo' (3) | Sergio & Elsie Bracci |
| 'Valley Knudsen' (3) | Mel & Polly Canfield |
| 'Grand Prix' (3) | Mel & Bobbie Belcher |
| 'Botan Yuki' | Art & Chris Gonos |
| 'Frank Houser' | D. T. Gray Family |
| 'Carter's Sunburst Pink' | Art & Chris Gonos |
| 'Lucky Star' | Dale & Mary Kay Mittag |
| 'Irene' | Marvin & Virginia Belcher |
| 'Firedance Variegated' | Art & Chris Gonos |
| 'Firedance Variegated' | Jac & Kathy Fagundo |
| 'Terrell Weaver Variegated' | Art & Chris Gonos |
| 'First Blush' | Sergio & Elsie Bracci |
| 'Miss Charleston Variegated' | D. T. Gray Family |
| 'Emma Gaeta Variegated' | Sergio & Elsie Bracci |

The Big Winners at the Southern California Camellia Council Show
Descanso Gardens
February 26 and 27, 2000

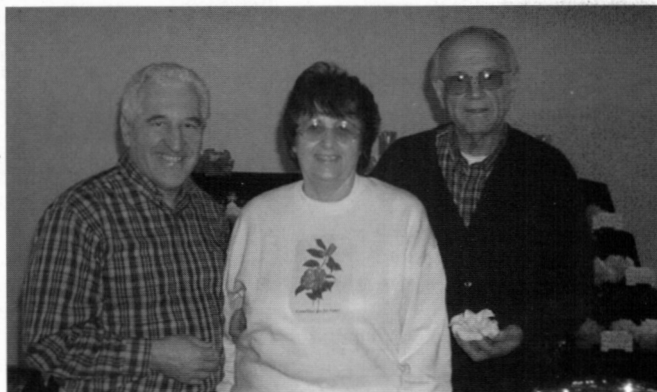


Show Chairman Brad King congratulates Marvin and Virginia Belcher for winning the Best Untreated Category with 'Junior Prom'



Sergio and Elsie Bracci's 'Harold L. Paige' won Best Treated Category

Chris and Art Gonos—Award of Merit Winners



CAMELLIA SOCIETY OF KERN COUNTY

52nd Annual Show

March 4 and 6, 2000

Japonicas—Large/Very Large

| | | |
|---------------------|--------------------|---------------------------|
| Best Single | 'Royal Velvet' | Don & Dolores Martin |
| Runner-up Single' | 'Katie Variegated' | Mel & Bobbie Belcher |
| Best Tray of 3 | 'Royal Velvet' | Mel & Bobbie Belcher |
| Runner-up Tray of 3 | 'Mathotiana' | Marvin & Virginia Belcher |

Japonicas—Medium

| | | |
|---------------------|------------------|-------------------------|
| Best Single | 'Midnight' | Mel & Polly Canfield |
| Runner-up Single | 'Margaret Davis' | Mel & Bobbie Belcher |
| Best Tray of 3 | 'Pearl Maxwell' | Harvey & Hanna Harbison |
| Runner-up Tray of 3 | 'Margaret Davis' | Tom & Dody Gilfoy |

Japonicas—Small

| | | |
|---------------------|-------------------------|---------------------------|
| Best Single | 'Ave Maria' | Joe Roup |
| Runner-up Single | 'Red Hots' | Ron & Joan Hill |
| Best Tray of 3 | 'Maroon and Gold' | Tom & Dody Gilfoy |
| Runner-up Tray of 3 | 'Alison Leigh Woodroof' | Marvin & Virginia Belcher |

Japonicas—Miniature

| | | |
|---------------------|-----------------------|---------------------------|
| Best Single | 'Something Beautiful' | Ron & Joan Hill |
| Runner-up Single | 'Man Size' | Marvin & Virginia Belcher |
| Best Tray of 3 | 'Man Size' | Marvin & Virginia Belcher |
| Runner-up Tray of 3 | 'Lemon Drop' | Joe Roup |

Reticulata or Reticulata Hybrids

| | | |
|---------------------|----------------|----------------------|
| Best Single | 'Frank Houser' | Jane Brady |
| Runner-up Single | 'Curtain Call' | Paul Karukstis |
| Best Tray of 3 | 'Frank Houser' | D. T. Gray Family |
| Runner-up Tray of 3 | 'Larry Piet' | Mel & Polly Canfield |

Non-Reticulata Hybrids

| | | |
|---------------------|---------------|--------------------|
| Best Single | 'Julia' | Joe Roup |
| Runner-up Single | 'Spring Daze' | Joe Roup |
| Best Tray of 3 | 'Nicky Crisp' | Les & JoAnn Brewer |
| Runner-up Tray of 3 | 'Spring Daze' | Bob & Alice Jaacks |

Special Culture

| | | |
|------------------|------------------------------|----------------------|
| Best Single | 'Harold L. Paige' | Mel & Bobbie Belcher |
| Runner-up Single | 'Miss Charleston Variegated' | D. T. Gray Family |

Collector's Tray of 3 Mixed Varieties

| | | |
|----------------|--|-----------------------------|
| Best Tray | 'Royal Velvet', 'Cherries Jubilee', 'Men's Mini' | Julius & Dorothy Christinon |
| Runner-up Tray | 'Hilda Jamieson', 'South Seas', 'Buttons 'N Bows' | Les & JoAnn Brewer |

Novice

| | | |
|------------------------------|--------------------|------------------|
| Best novice flower of show | 'Pink Frost' | Harriet Simonsen |
| Best single large/very large | 'Kramer's Supreme' | Harriet Simonsen |

| | | |
|--------------------------------------|-------------------|-------------------------|
| Runner-up single | 'C. M. Wilson' | Esther Baisden |
| Best single medium | 'Pink Frost' | Harriet Simonsen |
| Runner-up single | 'Nuccio's Gem' | Ray Warren |
| Best Small | 'Pink Perfection' | Pamela Gilbraith |
| Best hybrid, retic or non-retic | 'Emma Gaeta Var.' | Marsha Huff |
| Runner-up hybrid, retic or non-retic | 'Donation' | Charles & Marilyn Cowie |
| Best Tray of 3—one variety | 'Glen 40' | Esther Baisden |

Design Section

| | |
|---|----------------|
| McFadden Trophy (youth under 13 years of age) | Joseph Renzi |
| Adult Classes | |
| "Tri-Color" | Perry Aminian |
| "Designer's Choice" | Gloria Aminian |
| "Men Only" | Perry Aminian |

Court of Honor

| | |
|--|---------------------------|
| 'Elegans Chandler' | Tami Renzi |
| 'Glen 40' | Pamela Gilbraith |
| 'Tricolor' | Janet Wurtman |
| 'Lemon Drop' | Les & JoAnn Brewer |
| 'Katie Variegated' | Helen Maas |
| 'Grand Slam' | Fred & Beverly Dukes |
| 'Wildfire' | Marvin & Virginia Belcher |
| 'Little Babe Variegated' | Marvin & Virginia Belcher |
| 'Lucky Star' | Doris Dermody |
| 'Pink Perfection' | Fred & Beverly Dukes |
| 'Little Slam' | Fred & Beverly Dukes |
| 'Tomorrow Park Hill' | Mel & Bobbie Belcher |
| 'Dixie Knight Supreme' | Mel & Bobbie Belcher |
| 'Buttons 'N Bows' | David & Susan Trujillo |
| 'Valentine's Day' | Rudy Blanco |
| 'Hilda Jamieson', 'Jerry Donnan', 'Little Michael' | Les & JoAnn Brewer |

WELCOME NEW MEMBER
Deniece W. Douglass
3115 Charing Cross Road
Glendale, CA 91206 (818) 244-9749

Glenn and Jill Read, Glenn Read Nursery, members of Southern California Camellia Society and camellia societies around the world, have been asked by several of our members if they could sell and ship their camellias to California. As of March 3, 2000, Glenn Read Nursery passed all Nematode Soil Analysis Requirements and is now certified to ship to California.

Glenn Read Nursery
3114 W. Fire Dept. Road
Lucedale, MS 3945
Phone: 601-947-6592 Fax: 601-947-1835
E-Mail: grcamsan@ametro.net
Growers of quality Nursery Stock Since 1972
Japonica * Sasanqua * Hybrids * Related Species
Grafted * Own root stock

CAMELLIA SOCIETY OF SACRAMENTO

March 4 and 5, 2000

| | | |
|--|--------------------------|-----------------------|
| Outstanding Flower of Show | 'Elaine's Betty' | Larry & Nancy Pitts |
| Japonicas—Very Large | | |
| Best Single | 'Carter's Sunburst' | Maurice Vervalle |
| Runner-up Single | 'Elegans Champagne' | William D. Stewart |
| Best Tray of 3 | 'Tomorrow Park Hill' | Don & Joan Lesmeister |
| Best Tray of 5 | 'Tomorrow Park Hill' | Don & Joan Lesmeister |
| Japonicas—Large | | |
| Best Single | 'Elaine's Betty' | Larry & Nancy Pitts |
| Runner-up Single | 'Junior Prom' | Don & Joan Lesmeister |
| Best Tray of 3 | 'Nuccio's Gem' | Skip & Carolyn Evans |
| Best Tray of 5 | 'Nuccio's Carousel' | Virginia Rankin |
| Japonicas—Medium | | |
| Best Single | 'Spring Sonnet' | Skip & Carolyn Evans |
| Runner-up Single | 'Nuccio's Gem' | Larry & Nancy Pitts |
| Best Tray of 3 | 'Eleanor Martin Supreme' | Jim & Jackie Randall |
| Japonicas—Small | | |
| Best Single | 'Something Beautiful' | Don & Joan Lesmeister |
| Runner-up Single | 'Black Tie' | Larry & Nancy Pitts |
| Best Tray of 3 | 'Something Beautiful' | Don & Joan Lesmeister |
| Japonicas—Miniature | | |
| Best Single | 'William C. Noel' | Don & Joan Lesmeister |
| Runner-up Single | 'Tammia' | Jim & Jean Toland |
| Best Tray of 3 | 'Pink Perfection' | Julie Vierra |
| Best 5 Boutonnieres | 'Tama-No-Ura' | Jim & Jackie Randall |
| Best 11 Japonicas | 'Royal Velvet' | Jim & Jackie Randall |
| Best Collection of 3 Different Japonicas | | Eric Hansen |
| Best Collection of 9 Different Japonicas | | Larry & Nancy Pitts |
| Reticulata and Reticulata Hybrids | | |
| Best Single over 5 1/2" | 'John Hunt' | Larry & Nancy Pitts |
| Runner-up Single | 'Linda Carol' | Larry & Nancy Pitts |
| Best Single under 5 1/2" | 'Superior Peony' | Barbara Tuffli |
| Runner-up Single | 'Miss Santa Clara' | Don & Mary Bergamini |
| Best Tray of 3 | 'Black Lace' | Virginia Rankin |
| Best Tray of 5 | 'S. P. Dun' | Edith Mazzei |
| Non-Reticulata Hybrids | | |
| Best Single | 'Elsie Jury' | Larry & Nancy Pitts |
| Runner-up Single | 'Mona Jury Variegated' | Don & Sue Kendall |
| Best Tray of 3 | 'Nicky Crisp' | Don & Joan Lesmeister |
| Best Tray of 5 | 'Nicky Crisp' | Don & Joan Lesmeister |

Special Culture

Best Single Japonica
Best Single Reticulata

'Lady Laura' Elmer & Bernice Achterberg
'Linda Carol' Jim & Jackie Randall

Seedlings

Best
1st Runner-up
2nd Runner-up

Japonica
Reticulata Hybrid
Japonica

Larry & Nancy Pitts
Tom & Marge Lee
Hal & Deane Burch

Best Spray or Stem Exhibit**Best Fragrant Bloom****Best Yellow or Cream Bloom****Best Sacramento Member's Bloom****Best "Old Timers" Bloom****Best White Bloom****Sweepstakes Award—75 Blue Ribbons****Runner-up Sweepstakes Award—36 Blue Ribbons****Novice Sweepstakes Award—40 Blue Ribbons**

'Elegans Variegated'
'High Fragrance'
'Jury's Yellow' Elmer & Bernice Achterberg
'Magnoliaeflora'
'Magnoliaeflora'
'Elegans Champagne'

Sally Entizne
Robert Ehrhart
Bob & Nancy Steele
Bob & Nancy Steele
William D. Stewart
Don & Mary Bergamini
Don & Joan Lesmeister
Bob & Nancy Steels

Junior Class

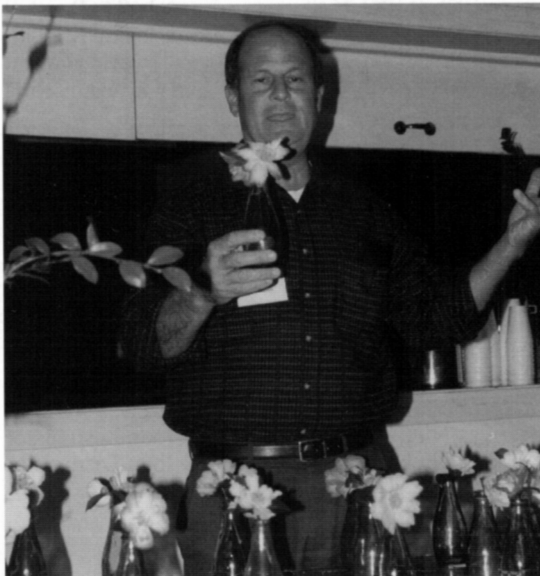
Best Miniature bloom
Runner-up Miniature
Best Bloom 2 1/2—4 1/2"
Runner-up
Best Japonica over 4 1/2"
Runner-up
Best Hybrid (any size)
Runner-up

'Black Tie'
'Something Beautiful'
'Wildfire'
'Nuccio's Carousel'
'Margaret Davis'
'Katie Variegated'
'Julie Variegated'
'Betts Supreme'

Jarod Bates
Jarod Bates
Jarod Bates
Jarod Bates
Robert Watson
Katie Watson
Jarod Bates
Jarod Bates

Flower Arrangement—Best of Show

Elida Garibay



Tom Nuccio, a perennial favorite speaker for the camellia society meetings, extols the beauty of the Sasanquas!

NORTHERN CALIFORNIA CAMELLIA SOCIETY SHOW

Danville, California
March 11 and 12, 2000

Sweepstakes

Runner-up Sweepstakes

Third Runner-up Sweepstakes

Award of Excellence

Challenge Award

Best of Show

'Royal Velvet'

Robert Ehrhart
Don & Mary Bergamini
Bob & Nancy Steele
Robert Ehrhart
Larry & Nancy Pitts
Larry & Nancy Pitts

Japonicas—Very Large

Best Single

Runner-up Single

Best Tray of 3

'Royal Velvet'
'Mary Fischer'
'Royal Velvet Variegated'

Larry & Nancy Pitts
Larry & Nancy Pitts
Don & Joan Lesmeister

Japonicas—Large

Best Single

Runner-up Single

Best Tray of 3

Best Tray of 5

'Veiled Beauty'
'Mary Alice Cox'
'Nuccio's Carousel'
'Nuccio's Carousel'

Larry & Nancy Pitts
Don & Sue Kendall
Don & Joan Lesmeister
Don & Joan Lesmeister

Japonicas—Medium

Best Single

Runner-up Single

Best Tray of 3

'Alta Gavin'
'Sweet Dreams'
'Peter Pan'

Don & Sue Kendall
Bob & Joanne Logan
Robert Ehrhart

Japonicas—Small

Best Single

Runner-up Single

Best Tray of 3

Best Tray of 5

'Mikey B'
'Ellen Daniels'
'Something Beautiful'
'Confetti Blush'

Larry & Nancy Pitts
Don & Joan Lesmeister
Don & Joan Lesmeister
Jim & Jean Toland

Japonicas—Miniature

Best Single

Runner-up Single

Best Tray of 3

Best Tray of 5

'Lemon Drop'
'Paper Doll'
'Night Rider'
'Night Rider'

Bob & Nancy Steele
Robert Ehrhart
Bob & Joanne Logan
Eric Hansen

Reticulata or Reticulata Hybrids

Best Single over 5 1/2"

Runner-up Single over 5 1/2"

Best Single under 5 1/2"

Runner-up Single under 5 1/2"

Best Tray of 3

Best Tray of 5

'Frank Houser Variegated'
'John Hunt'
'Crinoline'
'Applause'
'John Hunt'
'Arcadia'

Tom & Marge Lee
Larry & Nancy Pitts
Elmer & Bernice Achterberg
Gordon & Barbara Goff
Don & Joan Lesmeister
Robert Ehrhart

Non-Reticulata Hybrids

Best Single

Runner-up Single

Best Tray of 3

Best Tray of 5

'Elsie Jury'
'Julie Variegated'
'Elsie Jury'
'Nicky Crisp'

Larry & Nancy Pitts
Don & Joan Lesmeister
Larry & Nancy Pitts
Don & Joan Lesmeister

| | | |
|--|--|-----------------------|
| Best Large Seedling | 'Mandarich #167' | Don & Mary Bergamini |
| Best Medium Seedling | 'Mandarich #145' | Gordon & Barbara Goff |
| Best Boutonniere | Mrs. D. W. Davis' Seedling | Clem & Lois Roberts |
| Best Fragrant Seedling | 'Hallstone Seedling' | Jake Holtzman |
| Best Collection of 3 | 'Queen Bee', 'Nuccio's Gem', 'Little Babe Variegated' | Robert Ehrhart |
| Best Collection of 9 | 'Elegans Champagne', 'Mary Fischer', 'Moonlight Bay', 'Pharaoh', 'Margaret Hilford', 'Easter Morn', 'Silver Cloud', 'Linda Carol', 'Larry Piet' | Larry & Nancy Pitts |
| Best Collection of 9 Boutonnieres | 'Alisha Carter', 'Something Beautiful', 'Little Red Ridinghood', 'Lemon Drop', 'Ellen Daniels', 'Grace Albritton', 'Tammia', 'Spring Daze', 'Little Babe Variegated' | Don & Sue Kendall |
| Best Youth Japonica | 'Royal Velvet' | Amie Walker |
| Best Youth (Other than Japonica) | 'Julie Variegated' | Amie Walker |
| Best Bloom Named for Member | 'Ruta Hagmann' | Robert Ehrhart |
| Best Novice Bloom | 'Katie Variegated' | R. S. Langsam |
| Runner-up Novice Bloom | 'Pink Perfection' | Sharon Anne Walsh |

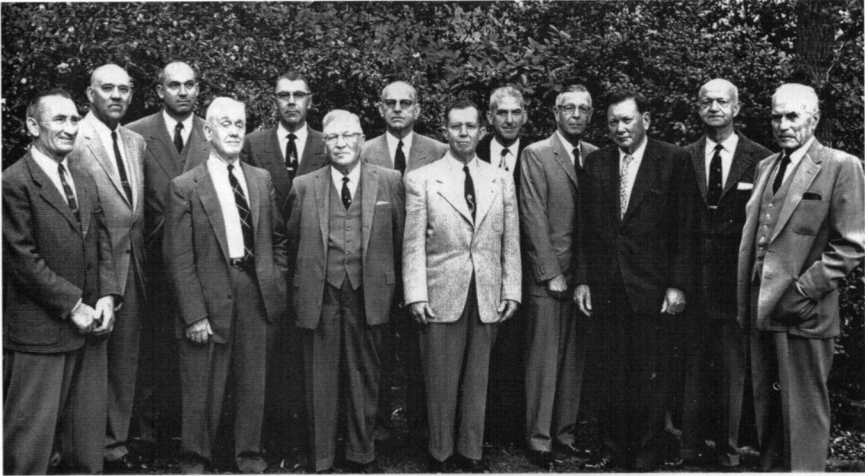


Christine Taylor, our new friend from New Zealand,, told about her research on petal blight. at a recent meeting of the Pomona Valley Camellia Society

When all the camellia shows were over, there were still so many beautiful camellias blooms, the Pomona Valley Camellia Society decided to have an "end of the season" show at their meeting. Mel and Bobbie Belcher are the Judges.



THE PAST MEETS THE PRESENT



The Grand Old Men of Camellias (1958):

Front row: Horace Ketteringham, Dr. Albert E. Langley, E. C. Tourje, William Wylam, Ralph Peer, Dr. William Hertrich
Back row: Harvey F. Short, Edwards H. Metcalf, J. Howard Asper, Harold E. Dryden, Dr. Stottmeyer, William Cuzner, Reg Ragland



E. C. Tourje's son Charles and wife Celia and family celebrated the Spring Festival at Descanso Gardens. The paintings were done by E. C. 's wife.



The Tourje Family lovingly set up this beautiful display to celebrate the memory of E. C. Tourje who left a treasured legacy to all succeeding camellia hobbyists. His book *Camellia Culture* contains a great wealth of information.

INDEX OF CAMELLIA REVIEW

Volume 61—September, October, 1999—March, April, 2000

| | |
|---|-----------------------|
| Avoiding "Potholes" at Camellia Shows, Mel Belcher | 1/14 |
| Better Late Than Never—But 40 Years?, Jim Emmons | 4/5 |
| Camellia Forest Update, Tim Thibault | 2/22 |
| Camellia Flower Blight in the UK, Jennifer Trehane | 2/8 |
| Camellia Flower Petal Blight in New Zealand, Peter Long and Christine Taylor | 1/5 |
| Camellia Rama 1999, Mary Anne Ray | 1/3; 2/6 |
| Camellia Reticulata Genealogy, C. Edward Simons | 4/9 |
| Camellia Show Judging, Bradford King | 2/20 |
| Camellias in Bloom, Tim Thibault | 2/23 |
| Color from September to May, Bradford King | 3/6 |
| Color or Colour, Bradford King | 3/12 |
| Comparing the 80's and 90's, Don Bergamini | 1/11 |
| Container Culture, R. W. Ragland | 2/11 |
| Descanso Camellia Festival, Bard King | 4/4 |
| Foliar Feeding, E. C. Snooks | 3/10 |
| Lee Chow's Camellias Live On, Marvin Belcher | 2/10 |
| 'Nicky Crisp', Robert Magrill | 4/10 |
| Petal Blight Research, Christine Taylor | 1/5; 3/4 |
| Research Reveals Camellias are Easy Plants to Grow, Tim Thibault | 2/24 |
| Show Results | |
| Camellia Society of Kern County | 4/17 |
| Camellia Society of Sacramento | 4/19 |
| Delta Camellia Society | 4/12 |
| Northern California Camellia Society | 4/21 |
| Pacific Camellia Society | 3/13 |
| Peninsula Camellia Society | 3/21 |
| Pomona Valley Camellia Society | 3/20 |
| Southern California Camellia Council | 4/14 |
| South Coast Camellia Society | 3/15 |
| Southern California Camellia Society, Descanso Gardens | 3/17 |
| Southern California Camellia Society, The Huntington | 3/19 |
| The Strain's the Game, E. C. Snooks | 4/11 |
| Trophy Table Winners of 1999, Don Bergamini | 1/9 |
| 2001 International Congress, Tim Thibault | 3/3 |
| What Would I Do Now, Bradford King | 2/3 |
| <hr/> | |
| Belcher, Marvin | 2/10 |
| Belcher, Mel | 1/14 |
| Bergamini, Don | 1/9; 1/11 |
| Emmons, Jim | 4/5 |
| King, Brad | 2/20; 3/6; 3/12; 4/4 |
| Long, Peter | 1/5 |
| Magrill, Robert | 4/10 |
| Ragland, R. W. | 2/11 |
| Ray, Mary Anne | 1/3; 2/6 |
| Simons, C. Edward | 4/6 |
| Snooks, E. C. | 3/10; 4/11 |
| Taylor, Christine | 1/5 |
| Thibault, Tim | 2/22; 2/23; 2/24; 3/3 |
| Trehane, Jennifer | 2/8 |

DIRECTORY OF CALIFORNIA CAMELLIA SOCIETIES

CENTRAL CALIFORNIA CAMELLIA SOCIETY: President—Jeane Shoemaker; Secretary—Joan Hill, 37341 Ave 17 1/2, Madera, 93638. Meetings: 3rd Wednesday, November-February, 7:30 p.m. Sheraton Smuggler's Inn, 3737 N. Blackstone, Fresno.

DELTA CAMELLIA SOCIETY: President—Larry Pitts; Secretary—Edith Mazzei, 1486 Yosemite Circle, Clayton 94517. Meetings: 2nd Tuesday, November-March, 7:30 p.m., City of Pittsburg Environmental Center, 2581 Harbor St., Pittsburg.

KERN COUNTY, CAMELLIA SOCIETY OF: President—Helen Maas; Secretary—Charlene McAllister, 2018 Kingston Place, Bakersfield 93306. For meeting dates and times, call Helen Maas (805)872-2188.

MODESTO, CAMELLIA SOCIETY OF: President—Mary Jo Pinheiro; Secretary—Sue Kendall, 1505 Gary Lane, Modesto, 95355. Meetings: 1st Sunday, October-April, 1:00 p.m., 220-A Standiford Avenue, Modesto.

NORTHERN CALIFORNIA CAMELLIA SOCIETY: President—Don Bergamini; Secretary—Eric Hansen. Meetings: 1st Monday, November-April, 7:30 p.m., Oak Grove School, 2050 Minert Road, Concord. Final meeting in May is a dinner meeting.

ORANGE COUNTY CAMELLIA SOCIETY: President—Linda Rodriguez; Secretary—Peggy Sheldon, 20151 Crown Reef Lane, Huntington Beach 92646. Meetings: 1st Monday, October-April, 7:00 p.m. Dept. of Education Building, 200 Kalmus, Costa Mesa

PACIFIC CAMELLIA SOCIETY: President—Tom Gilfoy; Secretary—Kathryn Korin, 1241 E. Calaveras St., Altadena 91001. Meetings: 1st Thursday, November-April, 7:30 p.m., Descanso Gardens, 1418 Descanso Drive, La Canada.

PENINSULA CAMELLIA SOCIETY: President—Ed Tooker; Secretary—Nicky Farmer, 360 Santa Margarita Avenue, Menlo Park 94025. Meetings: 4th Monday, October-March, Veterans' Building Annex, 711 Nevada St., Rm. 20 (elevator available), Recwood City

POMONA VALLEY CAMELLIA SOCIETY: President—David Trujillo; Secretary—Dorothy Christinson, 3751 Hoover St., Riverside 95204. Meetings: 2nd Monday, November-April, 7:30 p.m., Church of the Brethren, Corner "E" & Bonita, La Verne.

SACRAMENTO, CAMELLIA SOCIETY OF: President—Jackie Randall; Secretary—Gary Schanz, 1177 Cavanaugh Way, Sacramento 95822. Meetings: 4th Tuesday, October-April, 7:30 p.m., Studio Theater, 1028 "R" Street, Sacramento

SAN DIEGO CAMELLIA SOCIETY: President—Jay Vermilya; Secretary—Lew Gary, 11419 Cabela Place, San Diego 92127. Meetings: 3rd Wednesday, November-April, 7:30 p.m., Room 101 Casa del Prado, Balboa Park, San Diego.

SANTA CLARA COUNTY, INC., CAMELLIA SOCIETY OF: President—Walt Dabel. Meetings: 3rd Wednesday, October-April, 7:30 p.m., Lick Mill Park, 4750 Lick Mill Boulevard, Santa Clara.

SOUTH COAST CAMELLIA SOCIETY: President—Helen Gates; Secretary—Melita Johnson, 1251 10th Street, San Pedro 90731. Meetings: 3rd Tuesday, September-July, 7:30 p.m., South Coast Botanic Garden, 26300 Crenshaw Boulevard, Palos Verdes Peninsula.

SOUTHERN CALIFORNIA CAMELLIA SOCIETY: President—Brad King; Secretary—Bobbie Belcher, 7475 Brydon Road, La Verne 91750. Meetings: 7:30 p.m., Ayres Hall, Los Angeles County Arboretum, 301 Baldwin Avenue, Arcadia. Call Marilee Gray (624)4107 for meeting dates.



Your friends will enjoy receiving your greetings on these new camellia note cards. They also make great gifts for your fellow camellia lovers or for those you are trying to get involved in this wonderful hobby! Cards and matching envelopes are packaged in sets of 8.

Order Today!

